

## PRESS INFORMATION

### The Friedrichstadt-Palast Berlin



Friedrichstadt-Palast | Photo: Bernd Brundert

The Friedrichstadt-Palast Berlin offers a unique programme. The shows are performed exclusively at the Palast and feature ultramodern aesthetics, combined with the latest high-tech effects. The enthralling blend of dance, extravagant costumes, breathtaking stage sets and daring acrobatics mesmerises the shows' audiences.

The Palast's eventful past dates back to 1919 when Max Reinhardt opened the *Großes Schauspielhaus* on Schiffbauerdamm. Renamed the Friedrichstadt-Palast on 1 November 1947, it has been housed in a vast new building located at Friedrichstraße 107 in Berlin-Mitte since 1984.

When viewed from Friedrichstraße, the Palast doesn't appear to be particularly big. The building is in fact 80 metres wide, 110 metres deep and offers 195,000 cubic metres of usable space. Completed on 27 April 1984, the momentous building is the final large-scale construction project of the German Democratic Republic (GDR) and thus an outstanding architectural testimony to a reunified Germany.

As the last representative building to be built before the fall of the Berlin Wall in 1989, the Friedrichstadt-Palast marks both the peak and conclusion of the age of GDR "palaces". In light of its historical, artistic and urban development significance, the Berlin State Office for the Protection of Monuments declared the entire property a listed historical building on 3 March 2020.

After the Berlin Wall fell, the Palast succeeded in establishing itself as the #1 address in reunited Germany for elaborate and spectacular show entertainment. Thanks to extensive million-euro investments, the Palast today remains the largest and mos

#### PRESS CONTACTS:

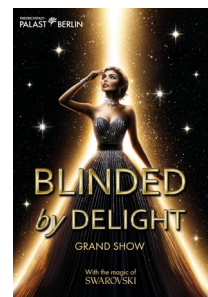
Maximilian Wahlandt  
Team Lead PR

T +49 30 2326 2-272  
wahlandt@palast.berlin

Natascha Lecki  
Director of Marketing, Sales & PR

T +49 30 2326 2-230  
M +49 152 5633 7101  
lecki@palast.berlin

[www.palast.berlin](http://www.palast.berlin)



Friedrichstadt-Palast Berlin

Friedrichstraße 107  
10117 Berlin-Mitte  
Germany

General Director:  
Dr. Berndt Schmidt

Chair of the Supervisory Board  
Sarah Wedl-Wilson,  
Senator for Culture & Social Cohesion

**BERLIN**  A theatre owned  
by the State of Berlin.

## PRESS INFORMATION

modern show palace in Europe. The Palast's ventilation system was entirely renewed in 2020 as part of far-reaching refurbishment and modernisation measures. The new system exchanges the air in the theatre hall up to eight times per hour.

Exclusive seating meeting the highest expectations can be found in the Wall Sky Lounge, which is the world's first sky lounge in a theatre. It offers six people the unique opportunity to watch the show from above, in a private lounge with its own bar.

The eventful history of the Palast and the theatre district surrounding Friedrichstraße is showcased in a permanent exhibition in the theatre foyer. The entertainment establishments of the Golden Twenties – and their fate during the Third Reich and the Second World War – are also detailed in a huge aerial photograph.

Every year, more than 700,000 people come to Germany's most visited stage (including for guest performances and festivals) and around half a million guests attend performances of the Grand Shows and Young Shows.

### The Palast – building facts, figures and data

Construction time	39 months (opened on 27 April 1984)
Building architects	Walter Schwarz and Manfred Prasser, among others
Architect – Great Hall	Werner Hoffmann
Listed as a historical building	3 March 2020
Building footprint	7,700 m <sup>2</sup>
Usable space	195,000 m <sup>3</sup>
Reinforced concrete used	Approx. 18,000 m <sup>3</sup>
Length	110 m
Width	80 m
Height	32 m

### Theatre hall

Seats	1,899, incl. 4 wheelchair spaces
Wall Sky Lounge	6 luxurious leather armchairs and a private bar

### PRESS CONTACTS:

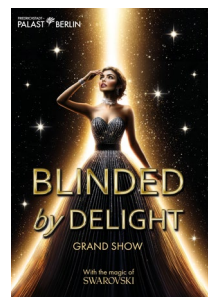
Maximilian Wahlandt  
Team Lead PR

T +49 30 2326 2-272  
wahlandt@palast.berlin

Natascha Lecki  
Director of Marketing, Sales & PR

T +49 30 2326 2-230  
M +49 152 5633 7101  
lecki@palast.berlin

[www.palast.berlin](http://www.palast.berlin)



Friedrichstadt-Palast Berlin

Friedrichstraße 107  
10117 Berlin-Mitte  
Germany

General Director:  
Dr. Berndt Schmidt

Chair of the Supervisory Board  
Sarah Wedl-Wilson,  
Senator for Culture & Social Cohesion

**BERLIN**  A theatre owned by the State of Berlin.

## PRESS INFORMATION

### Small Ballet Hall

Size	366.66 m <sup>2</sup>
Mirrors	110 m <sup>2</sup>
Ballet barres	77 m

### Large ballet hall

Size	445 m <sup>2</sup>
Mirrors	60 m <sup>2</sup>
Ballet barres	80 m

### Stage

Total usable stage area	2,854.02 m <sup>2</sup> 2 performer fly systems in the theatre hall 1 soundproof curtain 1 boundary curtain 1 iron curtain and two smoke exclusion curtains 2 DMX-controlled Kabuki curtain release units with drop system
Show deck	552 standard platforms 140 special platforms

### Main stage

Revolving platform	18 m Ø (optional)
Stage tower (total height)	32 m
Upper rigging	40 manual hoists 20 electric point hoists 15 motorised hoists 8 steel belt hoists 8 chain hoists 9 drum winches

### PRESS CONTACTS:

Maximilian Wahlandt  
Team Lead PR

T +49 30 2326 2-272  
wahlandt@palast.berlin

Natascha Lecki  
Director of Marketing, Sales & PR

T +49 30 2326 2-230  
M +49 152 5633 7101  
lecki@palast.berlin

[www.palast.berlin](http://www.palast.berlin)



Friedrichstadt-Palast Berlin

Friedrichstraße 107  
10117 Berlin-Mitte  
Germany

General Director:  
Dr. Berndt Schmidt

Chair of the Supervisory Board  
Sarah Wedl-Wilson,  
Senator for Culture & Social Cohesion

**BERLIN**



A theatre owned  
by the State of Berlin.



## PRESS INFORMATION

### Forestage

Cover plate	Painted surface
Lifting platform	12 m Ø with hydrostatically mounted revolving platform (size adaptable to show deck)
Upper rigging	2 curtain hoists 10 point hoists 1 steel belt hoist 42 chain hoists 10 special winches

### Production-specific installations for the BLINDED by DELIGHT Grand Show

Mobile water basin	174 m <sup>2</sup> base area 34,800 l capacity
'Zylindra'	1 toaster lift (1.20 m x 1.20 m) 3 podiums (4.40 m x 3.20 m) 1 LED cube – lift (3.40 m x 3.40 m) 3 special lifts for LED doors
LED walls	5 LED surfaces LED surfaces 1+2 (3.50 m x 8 m) Leyard LN 3.9S LED surfaces 3+4 (4 m x 8 m) Leyard LN 3.9S LED surface 5 (18 m x 7.50 m) ROE Vanish 8
Aerial rigging	2 flying rigs for performers above forestage Horizontal travel 40 m Vertical travel 16 m
'The Brick'	16 m x 4 m x 1.40 m mobile decorative element and people transport
FOS hoists	74 FOS hoists incl. LED light fixtures
Drive systems	9 motors in the Zylindra 5 Ventum moving frames in 'The Brick' 1 Ventum moving frame in the central BMX ramp 8 friction wheel drives in the water basin 2 motors per aerial rig

### PRESS CONTACTS:

Maximilian Wahlandt  
Team Lead PR

T +49 30 2326 2-272  
wahlandt@palast.berlin

Natascha Lecki  
Director of Marketing, Sales & PR

T +49 30 2326 2-230  
M +49 152 5633 7101  
lecki@palast.berlin

www.palast.berlin




Friedrichstadt-Palast Berlin

Friedrichstraße 107  
10117 Berlin-Mitte  
Germany

General Director:  
Dr. Berndt Schmidt

Chair of the Supervisory Board  
Sarah Wedl-Wilson,  
Senator for Culture & Social Cohesion

**BERLIN**  A theatre owned  
by the State of Berlin.

## PRESS INFORMATION

### Artistry

Teeterboard act	2 teeterboards (3.20 m x 0.50 m) 1 teeterboard trolley (11.50 m x 4 m)
Contortion act	Contortion trolley (3 m x 3 m)
BMX half pipe	1 central ramp (10 m x 10 m) 2 plexiglass ramps (3.75 m x 3 m) 2 wooden ramps (3.75 m x 3.65 m)

### Lighting

361 moving lights	15 Robe MegaPointe 50 Robe Robin Forte 4 Robe Robin iForte 21 Robe Robin Painte 74 Robe Robin Pointe 39 JB Lighting P18 Profile 42 JB Lighting Sparx 18 38 JB Lighting Sparx 7 16 Aleda B-Eye K20 14 Clay Paky Sharpy Wash 330 8 Elation Fuze Max Profile 40 ADJ Focus Flex
223 bars and PARs	75 Robe Robin Tetra X 32 Robe Robin Tetra2 54 Litecraft PowerBar X.15 62 ETC ColorSource PAR
69 conventional spotlights	10 Showtec Sunstrip Active 59 Portman P3
Control system	2 Grand MA 3 FS CRV 1 Grand MA 3 Light 1 Grand MA 3 Light CRV 1 Grand MA 3 FS 2 Grand MA FS 1 Grand MA 2 Light

### PRESS CONTACTS:

Maximilian Wahlandt  
Team Lead PR

T +49 30 2326 2-272  
wahlandt@palast.berlin

Natascha Lecki  
Director of Marketing, Sales & PR

T +49 30 2326 2-230  
M +49 152 5633 7101  
lecki@palast.berlin

www.palast.berlin



Friedrichstadt-Palast Berlin

Friedrichstraße 107  
10117 Berlin-Mitte  
Germany

General Director:  
Dr. Berndt Schmidt

Chair of the Supervisory Board  
Sarah Wedl-Wilson,  
Senator for Culture & Social Cohesion

**BERLIN**



A theatre owned  
by the State of Berlin.

## PRESS INFORMATION

5 Grand MA 2 NPU  
4 Grand MA 3 NPU L  
15 Grand MA 3 8 port Note  
2 Lumenradio Star Dust  
17 Moonlite 1

### Special effects

Haze/special effect fog

5 Auqua Low Fog  
4 LightmaXX Low Fog  
4 Smoke Factory Scotty II  
1 Smoke Factory Captain D.  
2 Smoke Factory Tour Hazer II  
6 MVS Hazer  
8 MagicFX Smoke Jet  
2 Smoke Factory Fan Fogger EC 2.6  
4 Smoke Factory FanAx Mini  
10 Eurolite RF-300 radial fans

Confetti

16 compressed air confetti machines  
8 Konfetti Swirl machines

Pyrotechnics

7 Galaxis G-Flame flame projectors  
1 Galaxis PFC Advanced controller  
1 Galaxis PFE Profi Midi 1 Output  
1 Galaxis PFE Advanced  
10 outputs

Laser system

1 Phenon RGB Laser 15W  
4 LPS RGB Laser 15W  
2 Lasergraph DSP Compact (dual output)  
1 Lasergraph DSP Compact (quad output)  
3 TLM TLM 120 – Studio Telescope

Tracking

34 Optitrack Slim (x13 setups)  
6 beltpacks  
3 Stage Precision units

### PRESS CONTACTS:

Maximilian Wahlandt  
Team Lead PR

T +49 30 2326 2-272  
wahlandt@palast.berlin

Natascha Lecki  
Director of Marketing, Sales & PR

T +49 30 2326 2-230  
M +49 152 5633 7101  
lecki@palast.berlin

www.palast.berlin



Friedrichstadt-Palast Berlin

Friedrichstraße 107  
10117 Berlin-Mitte  
Germany

General Director:  
Dr. Berndt Schmidt

Chair of the Supervisory Board  
Sarah Wedl-Wilson,  
Senator for Culture & Social Cohesion

**BERLIN**  A theatre owned  
by the State of Berlin.

## PRESS INFORMATION

### Sound

Digital, decentralised mixing console system for the front of house and monitoring (live band and vocals) with 192 input channels per console (total of 480 input channels) and 128 output channels

32-channel digital, wireless transmitter system (microphones and line signals)

20-channel wireless in-ear transmitter system (for band and vocals monitoring), fed from immersive in-ear system

18-channel wired in-ear system for band monitoring, fed from immersive in-ear system

75 channels for wireless radio

Immersive 360° sound system with passive P.A. System:

102 2x12", 1x4" loudspeakers (front, sides)

28 5" speakers (frontfill)

23 12" + 3" speakers (rear, roof)

6 8" + 1" speakers (sidefill)

8 2x18" subwoofers

Powered by:

36 amplifiers, each with 4 x 3.3 kW

12 amplifiers, each with 4 x 1 kW

Audio description system with 10 receivers

Induction loop for guests with a hearing impairment

### PRESS CONTACTS:

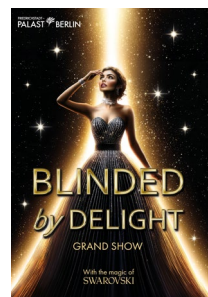
Maximilian Wahlandt  
Team Lead PR

T +49 30 2326 2-272  
wahlandt@palast.berlin

Natascha Lecki  
Director of Marketing, Sales & PR

T +49 30 2326 2-230  
M +49 152 5633 7101  
lecki@palast.berlin

[www.palast.berlin](http://www.palast.berlin)



Friedrichstadt-Palast Berlin

Friedrichstraße 107  
10117 Berlin-Mitte  
Germany

General Director:  
Dr. Berndt Schmidt

Chair of the Supervisory Board  
Sarah Wedl-Wilson,  
Senator for Culture & Social Cohesion

**BERLIN**



A theatre owned  
by the State of Berlin.