

PRESS INFORMATION

Friedrichstadt-Palast confirms solo artists and composers for THE ONE Grand Show / Songs by Gregor Meyle and BRIT Award winner KT Tunstall

Berlin, 17 May 2016



THE ONE Grand Show | Roman Lob and Brigitte Oelke will appear on stage at the Palast from 22 September. Gregor Meyle has composed music for the new international production.

THE ONE Grand Show (world premiere on 6 October; previews from 22 September) is going to be tremendous and utterly spectacular: over 100 artists from 26 nations will take to the world's biggest theatre stage, the production budget totals 11 million euros, and the 500 extravagant costumes for the show are being created by world-famous star fashion designer Jean Paul Gaultier. The cast is equally compelling and extremely versatile: beside the solo artists Roman Lob and Brigitte Oelke, Gregor Meyle and BRIT Award winner KT Tunstall also form part of the international creative team.

In 2012, Roman Lob won the German qualifying round of the Eurovision Song Contest. He represented Germany before an international audience of millions with the song 'Standing Still' written by British jazz virtuoso Jamie Cullum. He reached the #1 spot in the iTunes Charts, ranked third in the German singles charts, and was conferred an ECHO music award for his work. "Performing with this versatile ensemble on such a huge stage will be very special for me. We are working together on the dream of a Grand Show," says Roman Lob of his involvement in the new show at the Palast. The outstanding young musician is moving to Berlin for THE ONE Grand Show.

The versatile vocal soloist Brigitte Oelke, who previously starred in the musical 'We Will Rock You' as the 'Killer Queen', will also be moving to the German capital: "Wow, I am so excited! I have always wanted to perform in a show, surrounded by 60 fantastic dancers." In THE ONE Grand Show, an underground party takes place in a long abandoned revue theatre. A young partygoer (Roman Lob) loses himself in the aura of this mysterious place, and plunges into a waking dream that explores the theatre's past. Swiss singer Brigitte Oelke has been cast in the role of the former theatre director, who once again takes charge of her old revue theatre to stage one final 'show' in the mind's eye of the young partygoer. Kediesha McPherson and Maike Katrin Merkel have also been cast as singers.

PRESS CONTACT:

André Puchta
Director of Communications

T +49 30 2326 2-201

puchta@palast.berlin
www.palast.berlin



Friedrichstadt-Palast Berlin
Europe's Show Palace

Friedrichstraße 107
D-10117 Berlin-Mitte
In the East End Theatre District

General Director:
Dr. Berndt Schmidt

Chairman of the Board:
State Secretary of Culture
Tim Renner



Owned by the
City of Berlin

PRESS INFORMATION

The international team of composers for the new production includes the Scottish singer-songwriter Kate Victoria 'KT' Tunstall. She attained international acclaim for her single 'Black Horse and the Cherry Tree' from her debut album produced by Steve Osborne (U2). KT Tunstall was conferred the BRIT Award for the Best British Female Solo Artist, one of the most prestigious awards in the British pop scene.

Gregor Meyle has written several songs for THE ONE Grand Show: "It is a real honour for me and a very special adventure to be able to contribute to this breathtaking Grand Show with my music." Things are going very well for the musician at the moment: gold awards for both of his last studio albums 'New York - Stintino' and 'Meile für Meyle' on his label Meylemusic, the successful Meyleensteine TV format, and over 200,000 enthusiastic fans at his concerts.

The composer and producer Christian Lohr is also on board. He previously worked for stars of the likes of Gianna Nannini, Andrea Bocelli, Sting, Joss Stone, Liza Minnelli, Mick Jagger, Adoro, and Paulina Rubio. Arranger Robin Hoffmann completes the musical creative team. He most recently worked as producer for the debut album of British soprano singer Alikì Chrysochou (Britain's Got Talent) and the London Symphony Orchestra.

"Our 16-piece show band demonstrate their great stylistic diversity, playing everything from film music through pop to electro. Gregor Meyle and KT Tunstall have written exceptionally beautiful, poetic, and compelling songs that will accompany the audience during the dreamlike journey through time," says Musical Director and Principal Conductor Daniel Behrens of the musical concept.

The Palast's sound system is one of the most powerful and expensive indoor systems in Europe.

Further information:

The show is due to run until mid-2018. Advance ticket sales have now begun, with tickets available online at www.palast.berlin and via the telephone hotline on +49-30-2326 2326.

Unlike musicals, revue shows do not have a classic common thread. Typical of the revue art form is a collage of stunning show images bound by a cohesive theme – here, a waking dream in an old revue theatre, a journey through time in search of the one person that means everything to us – THE ONE.

Images:

www.palast.berlin/en/service/press/photos-logos

Information on THE ONE Grand Show:

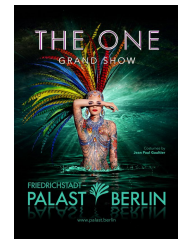
www.palast.berlin/en/home/shows/the-one-grand-show

PRESS CONTACT:

André Puchta
Director of Communications

T +49 30 2326 2-201

puchta@palast.berlin
www.palast.berlin



Friedrichstadt-Palast Berlin
Europe's Show Palace

Friedrichstraße 107
D-10117 Berlin-Mitte
In the East End Theatre District

General Director:
Dr. Berndt Schmidt

Chairman of the Board:
State Secretary of Culture
Tim Renner



Owned by the
City of Berlin